

110 130 series three-phase closed loop stepper motor

General specifications

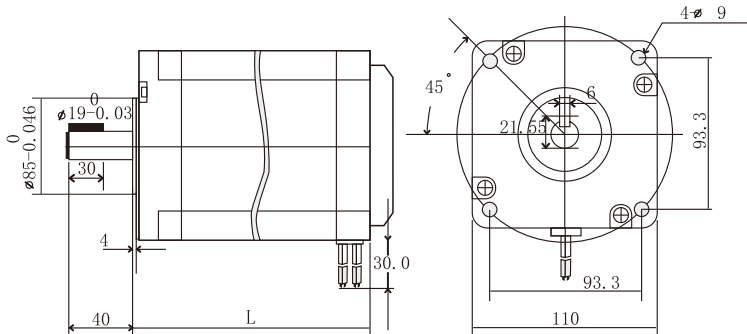
| | |
|-----------------------|------------------------------|
| Step accuracy | ±5% (Whole step, Empty load) |
| Temperature rise | 80 °C Max |
| Ambient temperature | -10 °C — +50 °C |
| Insulation resistance | 100MΩmin. 500VDC |
| Pressure resistance | 500VAC for one minute |
| Radial runout | 0.06 Max. (450g-load) |
| Axial runout | 0.08 Max. (450g-load) |



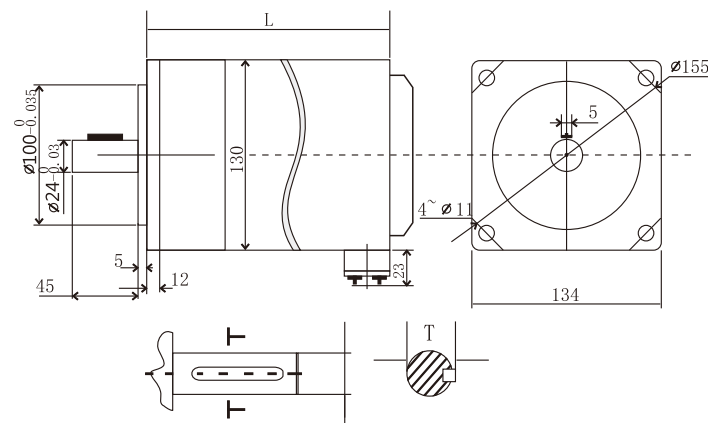
Technical specifications

| Model | Phase | Step angle (°) | Holding torque N.M | Rated current A | Phase inductance mH | Phase resistance Ohm | Number of leads | Rotor inertia (g.cm²) | Shaft diameter mm | Motor weight Kg | Body length L (mm) |
|---------------|-------|----------------|--------------------|-----------------|---------------------|----------------------|-----------------|-----------------------|-------------------|-----------------|--------------------|
| 3H110BG120-EC | 3 | 1.2 | 12 | 6.0 | 8.34 | 1.89 | 10 | 9.7 | 19 | 6.6 | 151 |
| 3H110BG160-EC | 3 | 1.2 | 16 | 6.5 | 8.73 | 1.89 | 10 | 13.6 | 19 | 9.0 | 185 |
| 3H110BG200-EC | 3 | 1.2 | 20 | 6.9 | 7.26 | 1.859 | 10 | 17.4 | 19 | 11.1 | 219 |
| 3H130BG230-EC | 3 | 1.2 | 23 | 5.0 | 7.05 | 1.46 | 10 | 23.4 | 24 | 12.3 | 168 |
| 3H130BG360-EC | 3 | 1.2 | 36 | 6.0 | 6.14 | 1.26 | 10 | 26.2 | 24 | 14.6 | 225 |
| 3H130BG500-EC | 3 | 1.2 | 50 | 6.0 | 3.26 | 0.96 | 10 | 39.4 | 24 | 17.4 | 280 |

Dimensions(mm)

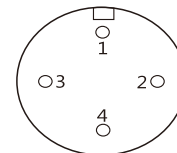


Dimensions(mm)



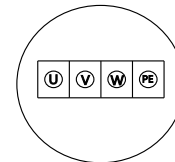
Wiring diagram

| Drive wiring | Corresponding motor lead |
|--------------|--------------------------|
| U | 1 |
| V | 2 |
| W | 3 |
| PE | 4 |



Wiring diagram

| Drive wiring | Corresponding motor lead |
|--------------|--------------------------|
| U | U |
| V | V |
| W | W |
| PE | PE |



Motor rear cover wiring diagram

Encoder wiring diagram

| | | | | | |
|---------|------|-------|-------|----------|--------|
| EB+ | EB- | EA+ | EA- | VCC | GND |
| Amarelo | Azul | Verde | Preto | Vermelho | Branco |